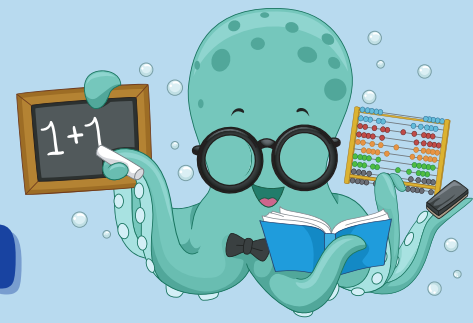




Lembar Kerja

# Perkalian

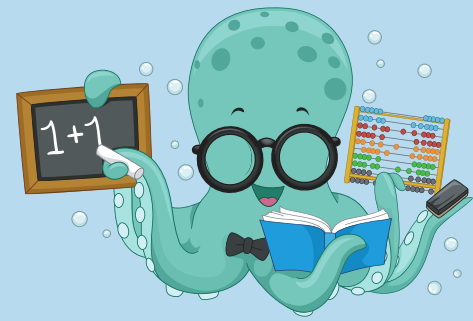


Selesaikan tabel perkalian berikut

$\times$	1	2	3	4	5	6	7	8	9	10
1										
2										
3										
4										
5										
6										
7										
8										
9										
10										



# Perkalian



Selesaikan tabel perkalian berikut

**1**

$1 \times 1 =$   
 $1 \times 2 =$   
 $1 \times 3 =$   
 $1 \times 4 =$   
 $1 \times 5 =$   
 $1 \times 6 =$   
 $1 \times 7 =$   
 $1 \times 8 =$   
 $1 \times 9 =$   
 $1 \times 10 =$

**2**

$2 \times 1 =$   
 $2 \times 2 =$   
 $2 \times 3 =$   
 $2 \times 4 =$   
 $2 \times 5 =$   
 $2 \times 6 =$   
 $2 \times 7 =$   
 $2 \times 8 =$   
 $2 \times 9 =$   
 $2 \times 10 =$

**3**

$3 \times 1 =$   
 $3 \times 2 =$   
 $3 \times 3 =$   
 $3 \times 4 =$   
 $3 \times 5 =$   
 $3 \times 6 =$   
 $3 \times 7 =$   
 $3 \times 8 =$   
 $3 \times 9 =$   
 $3 \times 10 =$

**4**

$4 \times 1 =$   
 $4 \times 2 =$   
 $4 \times 3 =$   
 $4 \times 4 =$   
 $4 \times 5 =$   
 $4 \times 6 =$   
 $4 \times 7 =$   
 $4 \times 8 =$   
 $4 \times 9 =$   
 $4 \times 10 =$

**5**

$5 \times 1 =$   
 $5 \times 2 =$   
 $5 \times 3 =$   
 $5 \times 4 =$   
 $5 \times 5 =$   
 $5 \times 6 =$   
 $5 \times 7 =$   
 $5 \times 8 =$   
 $5 \times 9 =$   
 $5 \times 10 =$

**6**

$6 \times 1 =$   
 $6 \times 2 =$   
 $6 \times 3 =$   
 $6 \times 4 =$   
 $6 \times 5 =$   
 $6 \times 6 =$   
 $6 \times 7 =$   
 $6 \times 8 =$   
 $6 \times 9 =$   
 $6 \times 10 =$

**7**

$7 \times 1 =$   
 $7 \times 2 =$   
 $7 \times 3 =$   
 $7 \times 4 =$   
 $7 \times 5 =$   
 $7 \times 6 =$   
 $7 \times 7 =$   
 $7 \times 8 =$   
 $7 \times 9 =$   
 $7 \times 10 =$

**8**

$8 \times 1 =$   
 $8 \times 2 =$   
 $8 \times 3 =$   
 $8 \times 4 =$   
 $8 \times 5 =$   
 $8 \times 6 =$   
 $8 \times 7 =$   
 $8 \times 8 =$   
 $8 \times 9 =$   
 $8 \times 10 =$

**9**

$9 \times 1 =$   
 $9 \times 2 =$   
 $9 \times 3 =$   
 $9 \times 4 =$   
 $9 \times 5 =$   
 $9 \times 6 =$   
 $9 \times 7 =$   
 $9 \times 8 =$   
 $9 \times 9 =$   
 $9 \times 10 =$

**10**

$10 \times 1 =$   
 $10 \times 2 =$   
 $10 \times 3 =$   
 $10 \times 4 =$   
 $10 \times 5 =$   
 $10 \times 6 =$   
 $10 \times 7 =$   
 $10 \times 8 =$   
 $10 \times 9 =$   
 $10 \times 10 =$