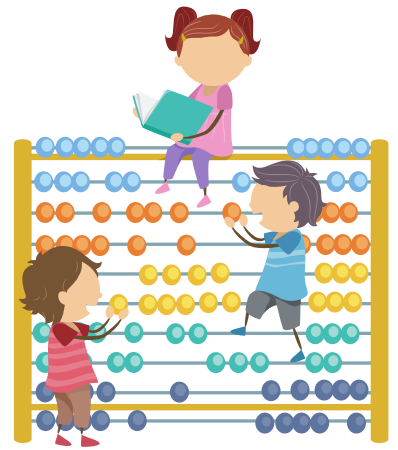


Penjumlahan

Ayo kerjakan penjumlahan berikut ini



$$\begin{array}{c} \text{4} \\ \text{Raspberry} \end{array} + \begin{array}{c} \text{3} \\ \text{Raspberry} \end{array} = \begin{array}{c} \text{ } \\ \text{Raspberry} \end{array}$$

$$\begin{array}{c} \text{6} \\ \text{Raspberry} \end{array} + \begin{array}{c} \text{1} \\ \text{Raspberry} \end{array} = \begin{array}{c} \text{ } \\ \text{Raspberry} \end{array}$$

$$\begin{array}{c} \text{8} \\ \text{Raspberry} \end{array} + \begin{array}{c} \text{9} \\ \text{Raspberry} \end{array} = \begin{array}{c} \text{ } \\ \text{Raspberry} \end{array}$$

$$\begin{array}{c} \text{5} \\ \text{Raspberry} \end{array} + \begin{array}{c} \text{7} \\ \text{Raspberry} \end{array} = \begin{array}{c} \text{ } \\ \text{Raspberry} \end{array}$$